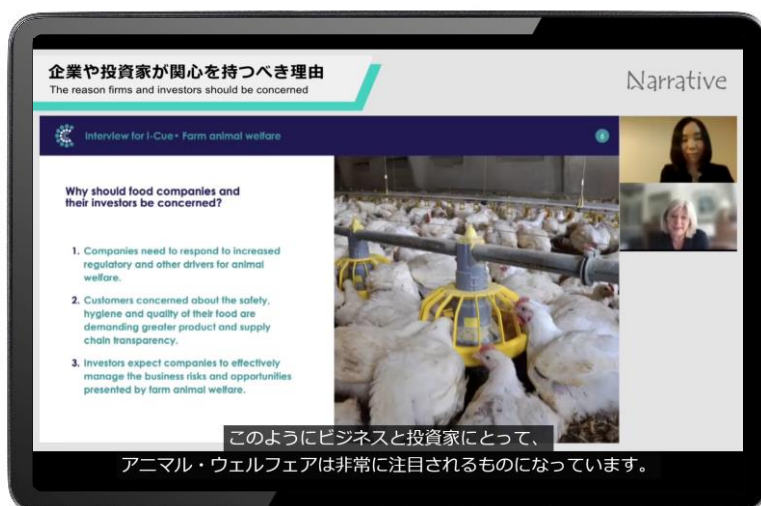
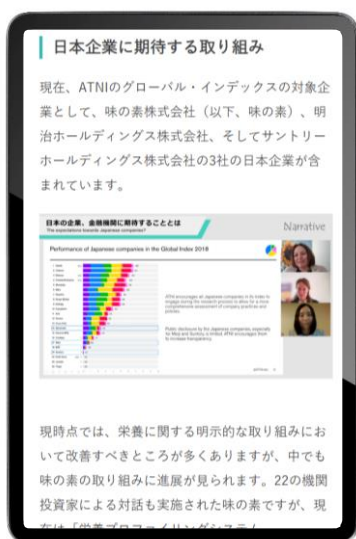


i-Cue launches website "Narrative", to bridge global investor ESG Initiatives with Japan

Tokyo, June 16, 2021 – i-Cue Inc. (hereinafter "i-Cue"), who offers a variety of solutions for understanding IR (Investor Relations) and financial relevant information, has launched an interview series named "Narrative" which introduces initiatives related to environmental social and governance (ESG) issues with Ms. Arisa Kishigami as a navigator on June 16 2021.

Ms. Kishigami said: Every day we face countless numbers of ESG issues, and the number of global investor initiatives trying to address these individual issues are growing. Japanese firms and investors may face challenges in engaging with these initiatives due to language, cultural, and communication style differences. I hope that this Narrative will help deepen the understanding of each initiative, and that it will lead to further collaboration, implementation and constructive discussion.

Illustrative of Narrative web site



Click to access **Narrative**
Website <https://www.narrative-esg.com>
[YouTube Link](#)
Twitter: @EsgNarrative



The introduction of initiatives in Narrative is consisted of two parts. First is an English interview video with Japanese subtitles. The other is a Japanese article summarizing the interview. Both are supported by Ms. Kishigami. All contents can be available for free. The clients of i-Cue are mainly IR departments and financial institutions, asset managements, banks and so on. "We are proud of starting provide a new service which can support our Japanese clients. Some ESG issues are not commonly recognized in Japan despite their importance. Narrative will be the "Cue" for considering what we can do." said Kensuke Watanabe, COO of i-Cue.



Ms. Kishigami has deep experience of Asian and European financial markets having developed and advised on a range of high profile ESG investment indices and ratings, and client engagement programs on stewardship and ESG integration, including as Head of ESG for the Asia Pacific region at FTSE Russell. Arisa currently works independently, and contributes broadly such as through Board Member Japan Sustainable Investment Forum (JSIF) and Specialist Advisor to Chronos Sustainability Ltd.

Contact: Narrative project owner, TEL+81-3-5579-8490, contact@narrative-esg.com

About i-Cue Inc.

Founded in 2011, i-Cue has offered a variety of solutions for IR (Investor Relations) and financial relevant information. IR supporting services are mainly video streaming of the financial results briefing for the investors, the introduction for the business or corporate overview and events hosted by IR department. To financial institution, offering videos that help individual investors can understand and sympathize the concept of financial products or financial system. i-Cue also provides and creates design to make consumers interested in finance. All businesses aim to create “Cue to interest” as the company name indicates.

For more information, please refer to the following link (Japanese only):

<http://www.i-cue.jp>